

Standard and optional equipment

Standard equipment

Truck

- Linde twin accelerator pedals
- Dual axis Linde Load Control joysticks integrated in armrest
- Comfort-class hydraulic suspension seat with extensive range of adjustment
- Adjustable steering wheel angle
- Low effort, responsive on-demand hydrostatic steering
- High safety and stability ensured by Linde ProtectorFrame
- Air intake filter with integral cyclone separator
- High-performance hydraulic filter concept preserves maximum oil purity and extends life of all hydraulic components
- Anti-glare display including fuel gauge, clock, hour meter and servicing information
- Control lights on display for engine oil pressure, engine overheating, parking brake, audible warning signal for engine and hydraulic oil temperature, blocked intake filter and low fuel level
- Ample storage space for writing materials, beverage cans, etc.
- Superelastic tyres

LPG truck is fitted with two-way catalytic converter and the gas cylinder mount is ergonomically designed for easy changing

LPG truck is fitted with accurate ultrasonic fuel level indicator for both volumetric and exchange cylinders

Mast

- Standard mast lift 3100 mm (H 40, H 45), 3000 mm (H 50)
- Top-mounted tilt cylinders
- Maintenance-free mast and tilt cylinder mountings
- Rubber-mounted joints
- Electronic tilt angle limiting
- Fork length 1000 mm
- Fork carriage width 1350 mm

Optional equipment

- Single accelerator pedal with direction selector on armrest
- Individual hydraulic control joysticks
- Standard masts 3000 mm to 5400 mm lift
- Duplex masts 3030 mm to 4130 mm lift
- Triplex masts 4525 mm to 6315 mm lift
- Integral sideshift
- Load backrest
- One or two additional hydraulic circuits
- Alternative fork lengths
- Overhead guard can be upgraded to full cab with roof, front and rear screens and doors (also available with tinted glass)
- Wiper-washers for front, rear and roof screens
- Seats providing additional comfort and adjustment
- Cab heater with integral pollen filter

- Radio with CD player and speakers
- Roof blind, clipboard, interior lighting, height-adjustable steering column
- Truck lighting/working lamps
- Full road lighting
- Mirrors
- Integral diesel particulate filter with charge status indicator on the display console
- Air pre-cleaner
- Audible reversing alarm, flasher and strobe beacons
- Biodiesel (RME) fuel version
- Alternative colour schemes

Other options available on request



Diesel and LPG Counterbalance Trucks
Capacity 4000 kg – 5000 kg
H 40, H 45, H 50

SERIES 394

Linde Material Handling

Linde

Safety

Linde ProtectorFrame: overhead guard and frame form a structural unit, resulting in maximum stability and safety. Top-mounted tilt cylinders allow use of slim mast channel sections for optimum visibility.

Performance

Advanced engine and drive technology, combined with the intelligent Linde Load Control system and precise fingertip control of all mast functions, enable the operator to use the truck's impressive potential to maximise productivity.

Comfort

A perfect interface between operator and truck has been achieved with the Linde ergonomic design concept. The spacious, cushioned cab, comfort-class seat with adjustable armrest and integrated intuitive controls create a superb stress-free environment that promotes optimum efficiency and high productivity.

Reliability

The enclosed robot-welded chassis is designed for maximum strength and durability. The resilient, maintenance-free mountings of the axles and tilt cylinders isolate the cab from road shocks and reduce whole body vibrations, and also increase uptime ratios and reduce operating costs.

Productivity

This superb range is fitted with the renowned Linde hydrostatic transmission, which requires no differential, no conventional service brake and no clutch. As a result, uptime is optimised, productivity is increased and maintenance costs are low.

Features

Linde hydrostatic drive

- Responsive, smooth and precise operation
- No clutch, differential or friction brakes; hydrostatic system acts as service brake
- Robust drive system, well proven in the most arduous applications
- Low maintenance costs and long life

Linde twin accelerator pedals

- Rapid change of forward/reverse direction without moving feet from pedals
- Short pedal stroke
- Fatigue-free working
- Increased productivity

Linde Load Control

- Accurate, safe load handling
- Effortless fingertip control of all mast functions
- Traction and lift functions completely separate

Linde ProtectorFrame

- Safe and robust chassis, enclosed on all sides
- Engine cover and servicing doors open wide for convenient access to all components

High-economy engine technology

- Diesel and LPG engines incorporating most advanced technology
- High torque
- Low fuel consumption
- Low exhaust gas and soot emission levels



Linde operator's compartment

- Designed to advanced ergonomic standards
- Spacious cab with automobile-equivalent legroom
- Excellent visibility of load and surrounding environment
- Cushioned drive axle reduces road shocks
- Quiet working environment



Linde truck control

- Rugged electronic controller
- Performance parameters matched to individual requirements
- High reliability resulting from redundant monitoring systems
- Automatic control of engine speed to match demand
- Modules totally enclosed for protection from dust and moisture



Linde clearview mast

- Superb visibility through slim-profile sections of mast
- Full load capacity up to deration lift height
- Excellent residual capacity
- Maintenance-free rubber mounting of mast and tilt cylinders
- Electronic limiting of tilt angle

Linde Material Handling (UK) Ltd

Kingsclere Road, Basingstoke, Hampshire RG21 6XJ
Tel +44(0)1256 342000, Fax +44(0)1256 342923, www.linde-mh.co.uk, enquiries@linde-mh.co.uk

Linde Material Handling

Linde

Technical data

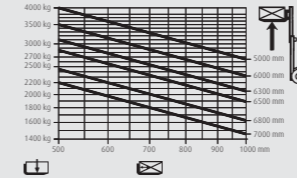
Characteristics	LINDE							
	1.1	1.2	1.3	1.4	1.5	1.6	1.7	1.8
1.1	Manufacturer							
1.2	Model designation	H40D	H40T	H45D	H45T	H50D	H50T	
1.3	Power unit: battery, diesel, petrol, LP gas, mains power	Diesel	LPG	Diesel	LPG	Diesel	LPG	
1.4	Operation: manual, pedestrian, stand-on, seated, order picker	Seated	Seated	Seated	Seated	Seated	Seated	
1.5	Load capacity	Q (kg)	4000	4000	4500	4500	5000	5000
1.6	Load centre	c (mm)	500	500	500	500	500	500
1.7	Axle centre to fork face	x (mm)	483	483	525	525	535	535
1.8	Wheelbase	y (mm)	1998	1998	2038	2038	2078	2078
2.1	Service weight	kg	5785	5968	6295	6480	6580	6763
2.2	Axle load with load, front/rear	kg	8610/1180	8665/1305	9555/1240	9613/1367	10371/1209	10425/1335
2.3	Axle load without load, front/rear	kg	2640/3145	2695/3270	2790/3505	2850/3630	2880/3700	2935/3830
3.1	Tyres, front/rear (SE = superelastic, P = pneumatic)		SE/SE	SE/SE	SE/SE	SE/SE	SE/SE	SE/SE
3.2	Tyre size, front		250-15	250-15	300-15	300-15	300-15	300-15
3.3	Tyre size, rear		250-15	250-15	250-15	250-15	250-15	250-15
3.5	Wheels, number front/rear (x = driven)		2x (4x)/2 ²⁾	2x (4x)/2 ²⁾	2x (4x)/2 ²⁾	2x (4x)/2 ²⁾	2x (4x)/2 ²⁾	2x (4x)/2 ²⁾
3.6	Track width, front	b10 (mm)	1221 (1499) ¹⁾	1221 (1499) ¹⁾	1190 (1499) ¹⁾	1190 (1499) ¹⁾	1190 (1499) ¹⁾	1190 (1499) ¹⁾
3.7	Track width, rear	b11 (mm)	1122	1122	1122	1122	1122	1122
4.1	Mast lift, forward/backward	α/β (°)	5,0/9,0	5,0/9,0	5,0/9,0	5,0/9,0	5,0/9,0	5,0/9,0
4.2	Height of mast, lowered	h1 (mm)	2420 (2375/2375) ²⁾³⁾	2420 (2375/2375) ²⁾³⁾	2421 (2376/2376) ²⁾³⁾	2421 (2376/2376) ²⁾³⁾	2421 (2376/2376) ²⁾³⁾	2421 (2376/2376) ²⁾³⁾
4.3	Free lift	h2 (mm)	150 (1611/1614) ³⁾	150 (1611/1614) ³⁾	150 (1460/1460) ³⁾	150 (1460/1460) ³⁾	150 (1460/1460) ³⁾	150 (1460/1460) ³⁾
4.4	Lift	h3 (mm)	3100 (3130/4675) ²⁾³⁾	3100 (3130/4675) ²⁾³⁾	3000 (3030/4525) ²⁾³⁾	3000 (3030/4525) ²⁾³⁾	3000 (3030/4525) ²⁾³⁾	3000 (3030/4525) ²⁾³⁾
4.5	Height of mast, extended	h4 (mm)	3895 (3895/5436) ²⁾³⁾	3895 (3895/5436) ²⁾³⁾	3916 (3946/5441) ²⁾³⁾	3916 (3946/5441) ²⁾³⁾	3916 (3946/5441) ²⁾³⁾	3916 (3946/5441) ²⁾³⁾
4.7	Height of overhead guard	h6 (mm)	2383	2383	2416	2416	2416	2416
4.8	Height of seat	h7 (mm)	1226	1226	1264	1264	1264	1264
4.12	Towing coupling height	h10 (mm)	703	703	726	726	719	719
4.19	Overall length	l1 (mm)	3984	3984	4066	4066	4116	4116
4.20	Length to fork face	l2 (mm)	2984	2984	3066	3066	3116	3116
4.21	Overall width	b1/b2 (mm)	1446/1423 (2003/1423) ⁴⁾	1446/1423 (2003/1423) ⁴⁾	1448/1423 (1988/1423) ⁴⁾	1448/1423 (1988/1423) ⁴⁾	1448/1423 (1988/1423) ⁴⁾	1448/1423 (1988/1423) ⁴⁾
4.22	Fork dimensions	s/e/l (mm)	50x120x1000	50x120x1000	50x120x1000	50x120x1000	60x130x1000	60x130x1000
4.23	Fork carriage to DIN 15 173, class / form A, B		3A	3A	3A	3A	3A	3A
4.24	Width of fork carriage	b3 (mm)	1350 (1750) ⁴⁾	1350 (1750) ⁴⁾	1350 (1750) ⁴⁾	1350 (1750) ⁴⁾	1350 (1750) ⁴⁾	1350 (1750) ⁴⁾
4.31	Ground clearance, mast	m1 (mm)	158	158	205	205	203	203
4.32	Ground clearance, centre of wheelbase	m2 (mm)	201	201	236	236	235	235
4.33	Aisle width, pallet 1000 x 1200 across forks	Ast (mm)	4355	4355	4433	4433	4480	4480
4.34	Aisle width, pallet 800 x 1200 along forks	Ast (mm)	4555	4555	4633	4633	4680	4680
4.35	Turning radius	Wa (mm)	2672	2672	2708	2708	2745	2745
4.36	Minimum pivoting point distance	b13 (mm)	700	700	700	700	700	700
5.1	Travel speed, with / without load	km/h	21/21	21/21	24/24	24/24	24/24	24/24
5.2	Lifting speed, with / without load	m/s	0.53/0.56	0.53/0.56	0.53/0.56	0.53/0.56	0.48/0.50	0.48/0.50
5.3	Lowering speed, with / without load	m/s	0.52/0.57	0.52/0.57	0.52/0.57	0.52/0.57	0.50/0.56	0.50/0.56
5.5	Tractive force, with / without load, 60 minute rating	N	28541/20570	28540/21160	25285/21841	25285/22350	25285/22375	25285/23040
5.7	Climbing ability with / without load, 30 minute rating	%	29.0/34.0	28.0/33.0	22.0/32.0	22.0/32.0	21.0/32.0	20.0/32.0
5.9	Acceleration time, with / without load (first 15m)	s	5.7/4.8	5.6/4.8	6.0/5.2	5.9/5.2	6.2/5.5	6.1/5.5
5.10	Service brake		Hydrostatic	Hydrostatic	Hydrostatic	Hydrostatic	Hydrostatic	Hydrostatic
7.1	Engine manufacturer / type		VW CBJB	VW/BMF	VW CBJB	VW/BMF	VW CBJB	VW/BMF
7.2	Engine performance according to ISO 1585	kW	55	55	55	55	55	55
7.3	Rate speed	min ⁻¹	2800	2800	2800	2800	2800	2800
7.4	Number of cylinders/displacement	cm ³	4/1968	6/3189	4/1968	6/3189	4/1968	6/3189
7.5	Fuel consumption according to VDI cycle	l/h; kg/h	4.6 ⁵⁾	4.6	4.8 ⁵⁾	4.8	5 ⁵⁾	5.0
8.1	Type of drive control		Hydrostatic transmission	Hydrostatic transmission	Hydrostatic transmission	Hydrostatic transmission	Hydrostatic transmission	Hydrostatic transmission
8.2	Working pressure for attachments	bar	170	170	170	170	170	170
8.3	Oil flow for attachments	l/min	48	48	48	48	48	48
8.4	Noise level, at operator's ear to EN 12053	dB(A)	79 (75) ⁶⁾	77 (73) ⁶⁾	79 (75) ⁶⁾	77 (73) ⁶⁾	79 (75) ⁶⁾	77 (73) ⁶⁾
8.5	Towing coupling, design / type		DIN 15 170-H	DIN 15 170-H	DIN 15 170-H	DIN 15 170-H	DIN 15 170-H	DIN 15 170-H

1) Figures in parentheses for SE twin tyres: H40, 250-15, H45/H50, 8.25-15
 2) With 150 mm free lift on standard mast
 3) Figures in parentheses for duplex/triplex mast

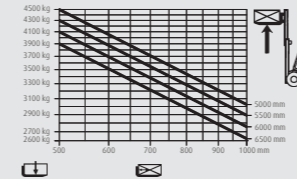
4) Option: Figure in parentheses for twin tyres
 5) Figure higher than previous due to amended measuring method in VDI Code 2198
 6) Figures in parentheses for overhead guard 6 (cabin)

Lifting capacity diagrams

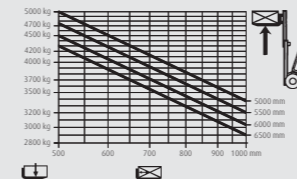
H40



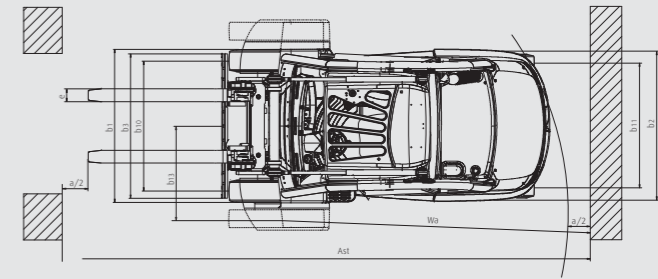
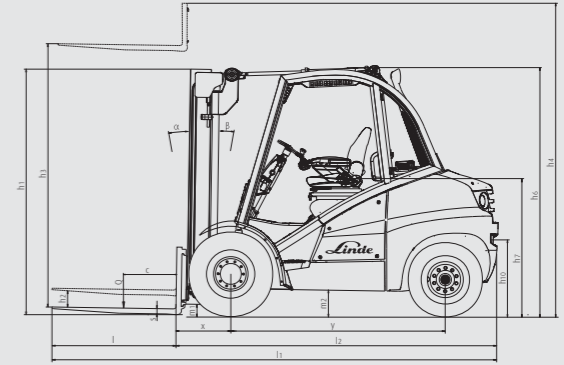
H45



H50



For standard and duplex masts with standard equipment



Standard mast										
Lift	h3	H40-50	3000	3100	3200	3700	4100	4400	5000	5400
Height of Mast, lowered	h1	H40	-	2420	2470	2720	2920	3070	3370	5570
		H45/50	2421	2471	2521	2771	2971	3121	3421	3621
Height of Mast, extended	h4	H40	-	3895	3995	4495	4895	5195	5795	6195
		H45/50	3916	4016	4116	4616	5016	5316	5916	6316
Free lift	h2	H40-50	150	150	150	150	150	150	150	150
Duplex mast										
Lift	h3	H40-50	3030	3130	3730	4130	-	-	-	-
Height of Mast, lowered	h1	H40	-	2375	2675	2875	-	-	-	-
		H45/50	2376	2426	2726	2926	-	-	-	-
Height of Mast, extended	h4	H40	-	3894	4494	4894	-	-	-	-
		H45/50	3946	4046	4646	5046	-	-	-	-
Free lift	h2	H40	-	1611	1911	2111	-	-	-	-
		H45/50	1460	1510	1810	2010	-	-	-	-
Triplex mast										
Lift	h3	H40-50	4525	4675	5365	5865	6315	-	-	-
Height of Mast, lowered	h1	H40	-	2375	2625	2825	2975	-	-	-
		H45/50	2376	2426	2676	2876	3026	-	-	-
Height of Mast, extended	h4	H40	-	5436	6426	6626	7076	-	-	-
		H45/50	5441	5591	6281	6781	7231	-	-	-
Free lift	h2	H40	-	1614	1864	2064	2214	-	-	-
		H45/50	1460	1510	1760	1960	2110	-	-	-

Alternative lift heights available on request. Lift height = h3 + s